

The background of the image features a dark blue field with several glowing, semi-transparent blue spheres of varying sizes. Interspersed among these are several bright red, glowing spheres, also of varying sizes. The overall effect is a microscopic or cellular view. The text is centered over the image.

# **STEM CELLS**

## **Antibodies**

---

**Elabscience®**

Focus on Lab Research Service for Life Science

# About Elabscience

---

Elabscience specializes in immunodiagnostic technology for life science community. We have complete platform for R&D and manufacture. At the same time, we have in house QC for every Antibody, endeavoring to keep your experiment results more consistent and precise. Through unremitting effort and development, our customers have spread in more than 100 countries all over the world.

Elabscience major products cover Proteins, Antibodies, ELISA Kits, CLIA Kits, Labeling Kits and related reagents.

Elabscience also offers custom services for our customers including Protein Expression and Purification Service, Custom Antibody Service, Custom ELISA Service, Molecular Biology Service, Cell Biology Service and Whole Research Project Solutions.



# Product Information

---

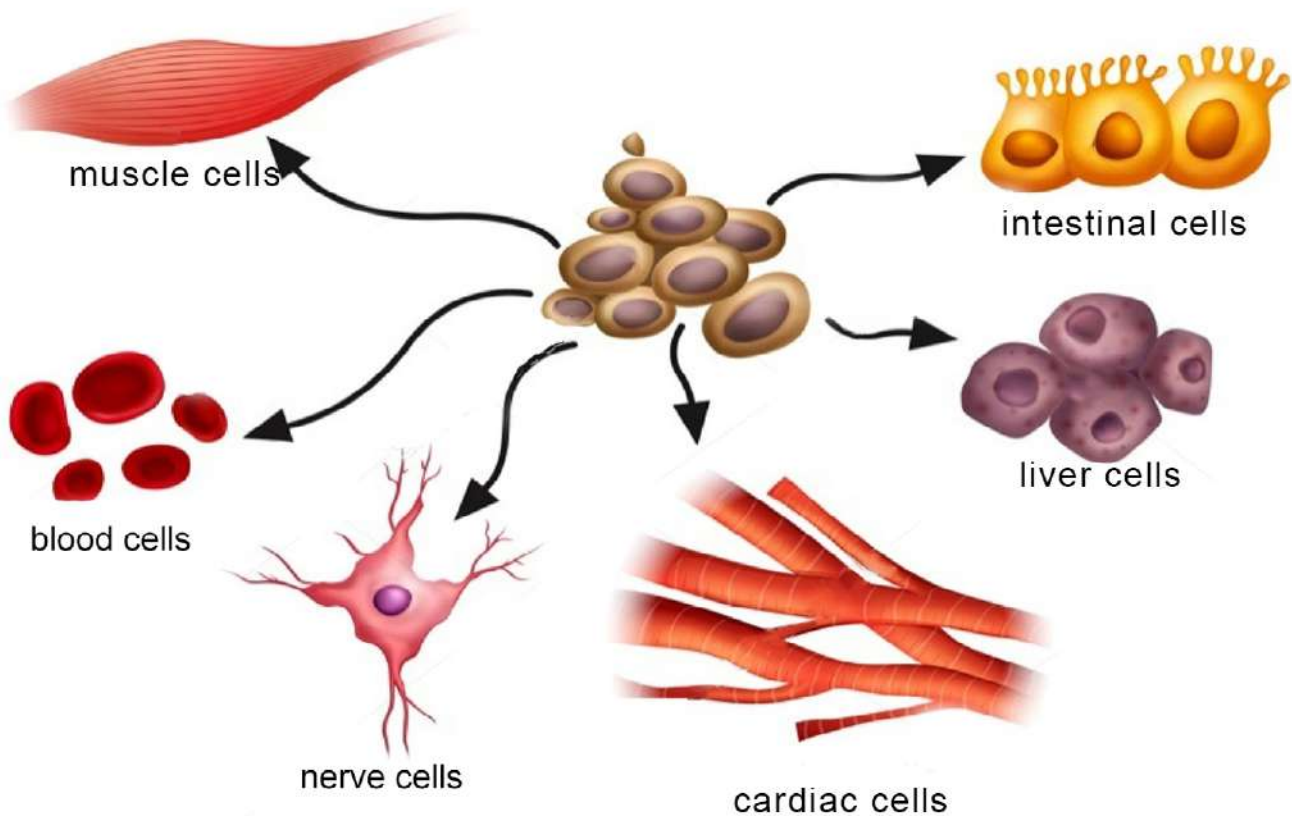




## Stem Cells

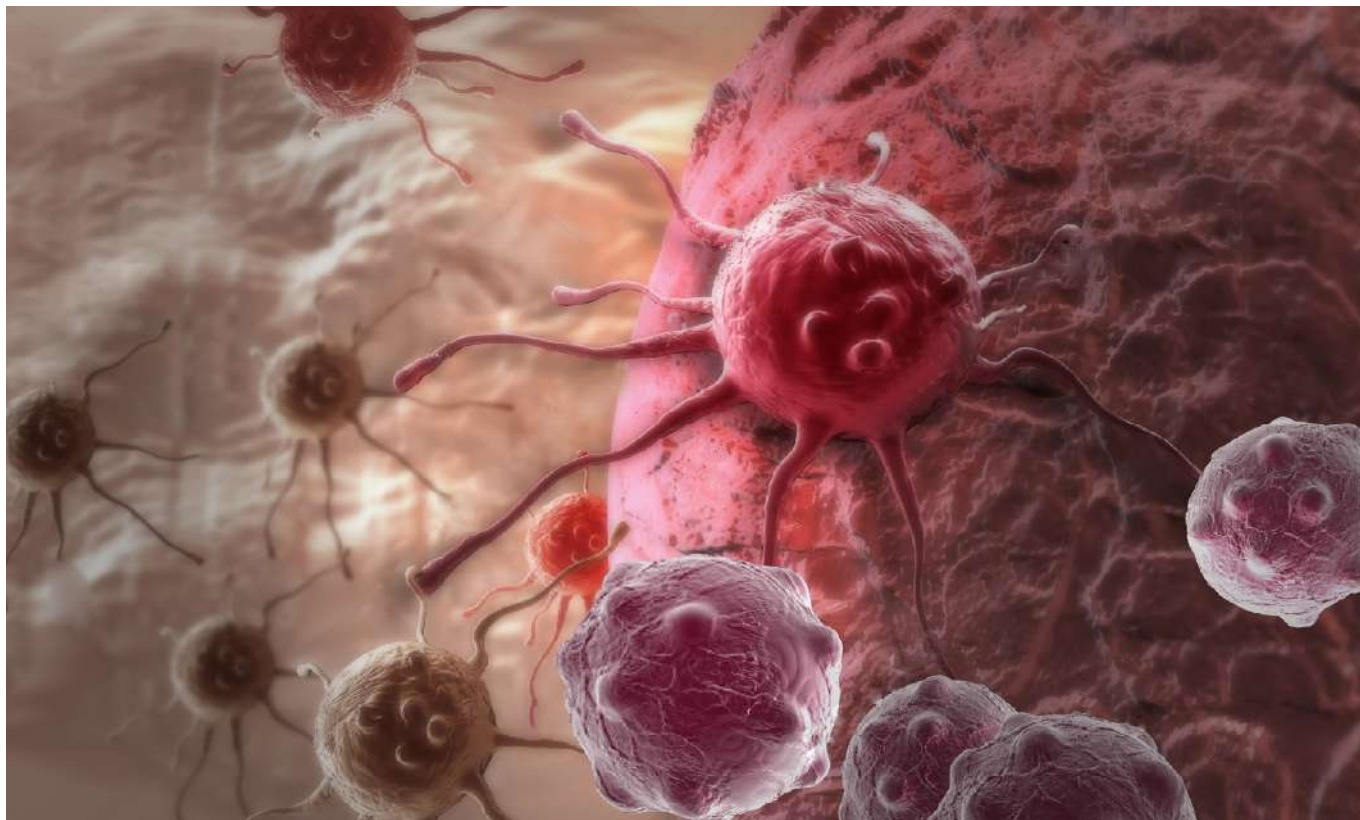
Stem cells are undifferentiated biological cells that can differentiate into specialized cells and can divide (through mitosis) to produce more stem cells. They are found in multicellular organisms. In mammals, there are two broad types of stem cells: embryonic stem cells, which are isolated from the inner cell mass of blastocysts, and adult stem cells, which are found in various tissues. In adult organisms, stem cells and progenitor cells act as a repair system for the body, replenishing adult tissues. In a developing embryo, stem cells can differentiate into all the specialized cells—ectoderm, endoderm and mesoderm—but also maintain the normal turnover of regenerative organs, such as blood, skin, or intestinal tissues.

### Differentiation of Human Stem Cell



# Product Details

## Cancer Stem Cells



Cat. No.	Product Name	Swissprot	Reactivity	Application
E-AB-12720	ANKRD26 Polyclonal Antibody	Q9UPS8	H	IHC,ELISA
E-AB-30633	BCAS3 Polyclonal Antibody	Q9H6U6	H,M	WB,ELISA
E-AB-33675	CD96 Polyclonal Antibody	P40200	H	WB,ELISA
E-AB-12613	PARD6A Polyclonal Antibody	Q9NPB6	H	WB,IHC,ELISA
E-AB-16041	PSCA Polyclonal Antibody	O43653	H,M	WB,IHC,ELISA
E-AB-11607	ST18 Polyclonal Antibody	O60284	H,M,R	IHC,ELISA

## Embryonic Stem Cells



Cat. No.	Product Name	Swissprot	Reactivity	Application
E-AB-30841	CD9 Polyclonal Antibody	P21926	H,M,R	WB,IHC,IF,ELISA
E-AB-30922	CHOP Polyclonal Antibody	P35638	H,M,R	WB,IHC,IF,ELISA
E-AB-31177	DDX3 Polyclonal Antibody	O00571	H,M,R	WB,IHC,ELISA
E-AB-10291	DPPA2 Polyclonal Antibody	Q7Z7J5	H	IHC,ELISA
E-AB-31456	FoxD3 Polyclonal Antibody	Q9UJU5	H,M	WB,IHC,ELISA
E-AB-14102	GDF3 Polyclonal Antibody	Q9NR23	H,M	WB,IHC,ELISA
E-AB-11453	GNL3 Polyclonal Antibody	Q9BVP2	H	WB,IHC,ELISA
E-AB-14111	GREM1 Polyclonal Antibody	O60565	H,M,R	WB,ELISA
E-AB-16019	HCRTR1 Polyclonal Antibody	O43613	H,M,R	IHC,ELISA
E-AB-15812	HCRTR2 Polyclonal Antibody	O43614	H,M,R	IHC,ELISA
E-AB-13301	HOXB8 Polyclonal Antibody	P17481	H,M	WB,ELISA
E-AB-30071	Cleaved-Integrin $\alpha 6$ LC (E942) Polyclonal Antibody	P23229	H	WB,ELISA

## Embryonic Stem Cells

Cat. No.	Product Name	Swissprot	Reactivity	Application
E-AB-33667	Integrin $\alpha 6$ Polyclonal Antibody	P23229	H,M,R	WB,ELISA
E-AB-20904	Phospho-Integrin $\beta 1$ (Thr788) Polyclonal Antibody	P05556	H,M,R	WB,IHC,ELISA
E-AB-14165	IRF6 Polyclonal Antibody	O14896	H,M	WB,IHC,ELISA
E-AB-14162	ITGB1 Polyclonal Antibody	P05556	H,M,R	WB,IHC,ELISA
E-AB-15147	JMJD6 Polyclonal Antibody	Q6NYC1	H,M,R	WB,IHC,ELISA
E-AB-15753	LIFR Polyclonal Antibody	P42702	H	IHC,ELISA
E-AB-13008	LIN28B Polyclonal Antibody	Q6ZN17	H,M	WB,ELISA
E-AB-12545	LRIG3 Polyclonal Antibody	Q6UXM1	H	IHC,ELISA
E-AB-32308	Oct-3/4 Polyclonal Antibody	Q01860	H,M,R	WB,IHC,ELISA
E-AB-12837	PODXL Polyclonal Antibody	O00592	H	IHC,ELISA
E-AB-20978	Phospho-SGK1 (Ser422) Polyclonal Antibody	O00141	H,M,R	WB,IHC,ELISA
E-AB-32883	SGK1 Polyclonal Antibody	O00141	H,M,R	WB,IHC,IF,ELISA
E-AB-20979	Phospho-Shb (Tyr246) Polyclonal Antibody	Q15464	H,M	WB,ELISA
E-AB-12636	SHH Polyclonal Antibody	Q15465	H,M,R	IHC,ELISA
E-AB-16071	SIPA1 Polyclonal Antibody	Q96FS4	H	IHC,ELISA
E-AB-33325	Sox-17 Polyclonal Antibody	Q9H6I2	H,M	WB,ELISA
E-AB-20982	Phospho-Stat3 (Ser727) Polyclonal Antibody	P40763	H,M,R,Mk	WB,IHC,IP,ELISA
E-AB-20983	Phospho-Stat3 (Tyr705) Polyclonal Antibody	P40763	H,M,R	WB,IHC,IP,ELISA
E-AB-32982	Stat3 Polyclonal Antibody	P40763	H,M,R	WB,IHC,IF,ELISA
E-AB-16081	STRA8 Polyclonal Antibody	Q7Z7C7	H	IHC,ELISA
E-AB-13170	TDGF1 Polyclonal Antibody	P13385	H	IHC,ELISA
E-AB-33071	TERT Polyclonal Antibody	O14746	H	WB,IF,ELISA
E-AB-13003	ZFP42 Polyclonal Antibody	Q96MM3	H	WB,ELISA



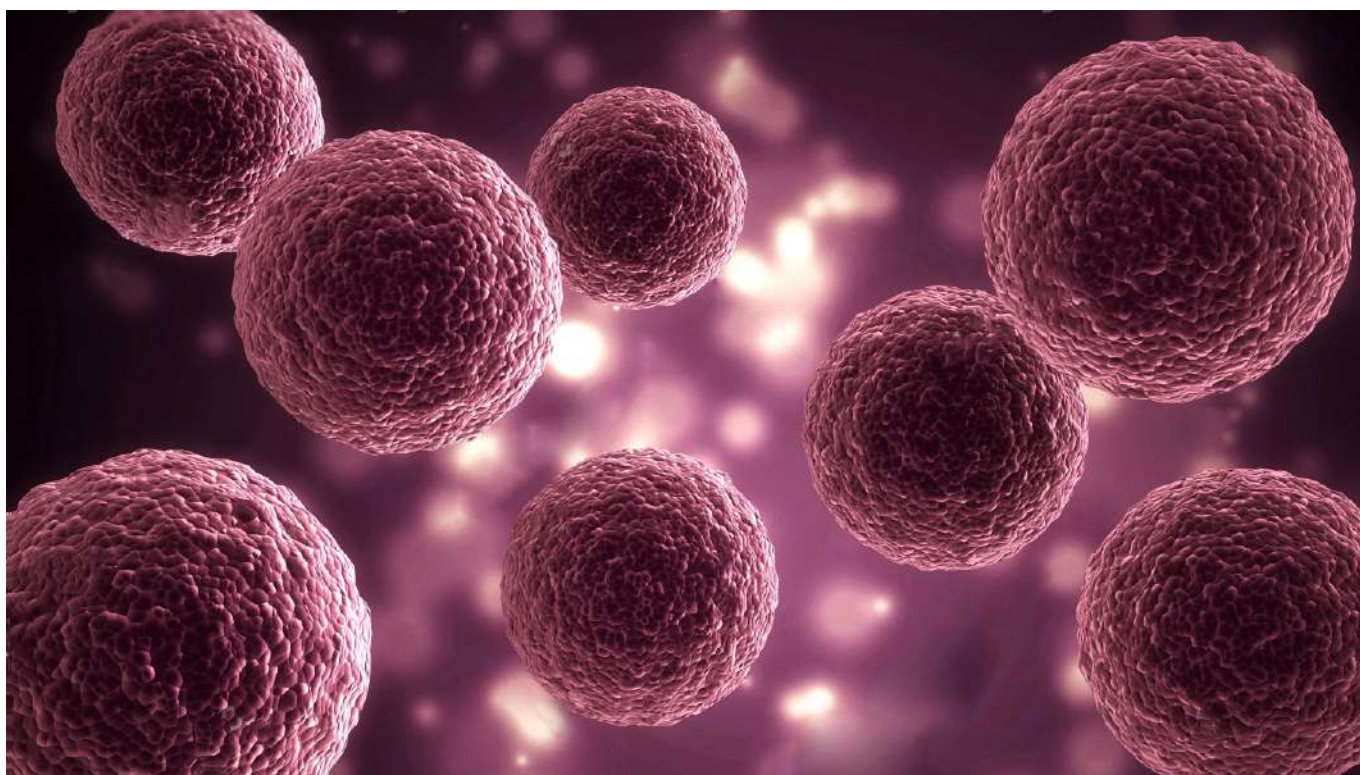
## Endothelial Progenitors



Cat. No.	Product Name	Swissprot	Reactivity	Application
E-AB-12281	ASPP1 Polyclonal Antibody	Q96KQ4	H,M	IHC,ELISA
E-AB-30824	CD34 Polyclonal Antibody	P28906	H,M	WB,ELISA
E-AB-13124	CD36 Polyclonal Antibody	P16671	H	WB,IHC,ELISA
E-AB-20874	Phospho-Flk-1 (Tyr1175) Polyclonal Antibody	P35968	H,M,R	WB,IHC,ELISA
E-AB-20875	Phospho-Flk-1 (Tyr1214) Polyclonal Antibody	P35968	H,M,R	WB,IHC,IF,ELISA
E-AB-31442	Flk-1 Polyclonal Antibody	P35968	H,M	WB,IHC,IF,ELISA
E-AB-21282	Phospho-Fusin (Ser339) Polyclonal Antibody	P61073	H,M,R,Mk	WB,IHC,IF,ELISA
E-AB-31485	Fusin Polyclonal Antibody	P61073	H,M,R	WB,IF,ELISA
E-AB-30070	Cleaved-Integrin $\alpha$ 5 LC (E895) Polyclonal Antibody	P08648	H	WB,ELISA
E-AB-33666	Integrin $\alpha$ 5 Polyclonal Antibody	P08648	H,M,R	WB,ELISA
E-AB-33100	Tie-1 Polyclonal Antibody	P35590	H,M,R	WB,ELISA
E-AB-21068	Phospho-Tie-2 (Tyr992) Polyclonal Antibody	Q02763	H,M	WB,ELISA
E-AB-10679	VWF Polyclonal Antibody	P04275	H	IHC,ELISA



## Germline Stem Cells



Cat. No.	Product Name	Swissprot	Reactivity	Application
E-AB-14799	BMP15 Polyclonal Antibody	O95972	H	WB,IHC,ELISA
E-AB-30659	BMP-8A Polyclonal Antibody	Q7Z5Y6	H	WB,IHC,IF,ELISA
E-AB-20844	Phospho-c-Kit (Tyr721) Polyclonal Antibody	P10721	H,M,R	WB,ELISA
E-AB-30933	c-Kit Polyclonal Antibody	P10721	H,M	WB,IHC,ELISA
E-AB-14002	CMTM2 Polyclonal Antibody	Q8TAZ6	H	IHC,ELISA
E-AB-13187	DDX4 Polyclonal Antibody	Q9NQI0	H,M,R	IHC,ELISA
E-AB-31314	Eme1 Polyclonal Antibody	Q96AY2	H	WB,ELISA
E-AB-31327	EOMES Polyclonal Antibody	O95936	H,M	WB,ELISA
E-AB-12487	GPR64 Polyclonal Antibody	Q8IZP9	H	IHC,ELISA
E-AB-10850	IFITM3 Polyclonal Antibody	Q01628	H	WB,IHC,ELISA
E-AB-15196	MEI1 Polyclonal Antibody	Q5TIA1	H	IHC,ELISA
E-AB-32067	Mos Polyclonal Antibody	P00540	H	WB,IF,ELISA
E-AB-32125	MSY2 Polyclonal Antibody	Q9Y2T7	H,M	WB,IHC,IF,ELISA

## Germline Stem Cells

Cat. No.	Product Name	Swissprot	Reactivity	Application
E-AB-11419	NANOS2 Polyclonal Antibody	P60321	H	IHC,ELISA
E-AB-13004	PIWIL3 Polyclonal Antibody	Q7Z3Z3	H	IHC,ELISA
E-AB-10024	RBMY1A1 Polyclonal Antibody	P0DJD3	H	WB,ELISA
E-AB-16866	SNX3 Polyclonal Antibody	O60493	H,M,R	WB,IHC,ELISA
E-AB-15976	SPAG6 Polyclonal Antibody	O75602	H,M	IHC,ELISA
E-AB-10610	SPAG8 Polyclonal Antibody	Q99932	H	IHC,ELISA
E-AB-14426	SPATA6 Polyclonal Antibody	Q9NWH7	H,M,R	WB,IHC,ELISA
E-AB-15360	TRIM69 Polyclonal Antibody	Q86WT6	H,M,R	IHC,ELISA
E-AB-15303	ZBTB16 Polyclonal Antibody	Q05516	H,M	WB,ELISA

## Hematopoietic Progenitors



Cat. No.	Product Name	Swissprot	Reactivity	Application
E-AB-12564	ABCB1 Polyclonal Antibody	P08183	H	IHC,ELISA
E-AB-30386	ABCB7 Polyclonal Antibody	O75027	H	WB,IHC,ELISA
E-AB-30393	ABCG2 Polyclonal Antibody	Q9UNQ0	H	WB,IHC,ELISA
E-AB-16159	ACE Polyclonal Antibody	P12821	H,M,R	WB,IHC,ELISA
E-AB-10039	ALDH1A1/ALDH1A2/ALDH1A3 Polyclonal Antibody	P00352/O94788/ P47895	H	WB,IHC,ELISA
E-AB-15918	ANGPTL2 Polyclonal Antibody	Q9UKU9	H,M	WB,IHC,ELISA
E-AB-33689	BST-2 Polyclonal Antibody	Q10589	H	WB,ELISA
E-AB-30097	CD10 Polyclonal Antibody	P08473	H,M,R	WB,ELISA
E-AB-30214	CD110 Polyclonal Antibody	P40238	H,M,R	WB,ELISA
E-AB-33656	CD13 Polyclonal Antibody	P15144	H	WB,ELISA
E-AB-30803	CD137 Polyclonal Antibody	Q07011	H	WB,IF,ELISA
E-AB-22048	CD16 Monoclonal Antibody	P08637	H	WB
E-AB-30809	CD19 Polyclonal Antibody	P15391	H,M,Mk	WB,ELISA



## Hematopoietic Progenitors

Cat. No.	Product Name	Swissprot	Reactivity	Application
E-AB-33511	CD2 Polyclonal Antibody	P06729	H	WB,ELISA
E-AB-22011	CD20 Monoclonal Antibody	P11836	H,M,R	IHC
E-AB-33557	CD201 Polyclonal Antibody	Q9UNN8	H,M,R	WB,ELISA
E-AB-14843	CD22 Polyclonal Antibody	P20273	H	IHC,ELISA
E-AB-33541	CD229 Polyclonal Antibody	Q9HBG7	H	WB,ELISA
E-AB-22040	CD23 Monoclonal Antibody	P06734	H,M,R	WB
E-AB-16308	CD24 Polyclonal Antibody	P25063	H	IHC,ELISA
E-AB-11054	CD244 Polyclonal Antibody	Q9BZW8	H,M	WB,IHC,ELISA
E-AB-14846	CD27 Polyclonal Antibody	P26842	H	WB,IHC,ELISA
E-AB-33555	CD276 Polyclonal Antibody	Q5ZPR3	H,M,R	WB,ELISA
E-AB-33514	CD28 Polyclonal Antibody	P10747	H	WB,ELISA
E-AB-30273	CD292 Polyclonal Antibody	P36894	H	WB,ELISA
E-AB-30822	CD32 Polyclonal Antibody	P31994	H,M,R	WB,IHC,ELISA
E-AB-33551	CD328 Polyclonal Antibody	Q9Y286	H	WB,ELISA
E-AB-14849	CD33 Polyclonal Antibody	P20138	H	WB,IHC,ELISA
E-AB-16317	CD38 Polyclonal Antibody	P28907	H,M,R	WB,IHC,ELISA
E-AB-30826	CD3- $\delta$ Polyclonal Antibody	P04234	H	WB,ELISA
E-AB-30827	CD4 Polyclonal Antibody	P01730	H,M	WB,IHC,IF,ELISA
E-AB-21049	Phospho-CD40 (Thr254) Polyclonal Antibody	P25942	H,M	WB,ELISA
E-AB-21034	Phospho-CD44 (Ser706) Polyclonal Antibody	P16070	H,M,R	WB,ELISA
E-AB-11364	CD44 Polyclonal Antibody	P16070	H,M	WB,IHC,ELISA
E-AB-30830	CD45 Polyclonal Antibody	P08575	H,M,R	IHC,IF,ELISA
E-AB-21105	Phospho-CD5 (Tyr453) Polyclonal Antibody	P06127	H,M,R	WB,IHC,IF,ELISA
E-AB-13133	CD59 Polyclonal Antibody	P13987	H	WB,IHC,ELISA
E-AB-33654	CD6 Polyclonal Antibody	P30203	H	WB,ELISA

## Hematopoietic Progenitors

Cat. No.	Product Name	Swissprot	Reactivity	Application
E-AB-30835	CD69 Polyclonal Antibody	Q07108	H,M,R	WB,ELISA
E-AB-21204	Phospho-CD71 (Ser24) Polyclonal Antibody	P02786	H,M	WB,IHC,ELISA
E-AB-30837	CD71 Polyclonal Antibody	P02786	H,M	WB,IHC,ELISA
E-AB-13083	CD80 Polyclonal Antibody	P33681	H	IHC,ELISA
E-AB-13583	CD97 Polyclonal Antibody	P48960	H	IHC,ELISA
E-AB-33676	CD98 Polyclonal Antibody	P08195	H,M,R	WB,ELISA
E-AB-16332	CDCA4 Polyclonal Antibody	Q9BXL8	H,M	IHC,ELISA
E-AB-16333	CDCP1 Polyclonal Antibody	Q9H5V8	H	WB,IHC,ELISA
E-AB-12465	CSF3R Polyclonal Antibody	Q99062	H	IHC,ELISA
E-AB-10283	DLK1 Polyclonal Antibody	P80370	H,M	WB,ELISA
E-AB-31316	Emp Polyclonal Antibody	Q7L5Y9	H,M,R	WB,IHC,ELISA
E-AB-31341	EphB1/2/3/4 Polyclonal Antibody	P54762/P29323/ P54753/P54760	H,M	WB,IHC,ELISA
E-AB-31343	EphB4 Polyclonal Antibody	P54760	H,M	WB,IHC,IF,ELISA
E-AB-16409	EPO Polyclonal Antibody	P01588	H,M,R	WB,IHC,ELISA
E-AB-21111	Phospho-EpoR (Tyr368) Polyclonal Antibody	P19235	H,M,R	WB,IF,ELISA
E-AB-21311	Phospho-EpoR (Tyr426) Polyclonal Antibody	P19235	H,M,R	WB,ELISA
E-AB-12396	EPOR Polyclonal Antibody	P19235	H,M,R	WB,IHC,ELISA
E-AB-31358	ER81 Polyclonal Antibody	P50549	H,M	WB,IHC,ELISA
E-AB-14117	ERG Polyclonal Antibody	P11308	H,M	WB,IHC,ELISA
E-AB-15010	FAIM2 Polyclonal Antibody	Q9BWQ8	H,M,R	WB,IHC,ELISA
E-AB-31409	FAS Polyclonal Antibody	P25445	H	WB,IF,ELISA
E-AB-31410	FAS-L Polyclonal Antibody	P48023	H,M	WB,IHC,IF,ELISA
E-AB-11052	FCER2 Polyclonal Antibody	P06734	H	IHC,ELISA
E-AB-15125	FCGR3A Polyclonal Antibody	P08637	H	IHC,ELISA
E-AB-31507	Gas6 Polyclonal Antibody	Q14393	H	WB,IHC,ELISA

## Hematopoietic Progenitors

Cat. No.	Product Name	Swissprot	Reactivity	Application
E-AB-20882	Phospho-GATA-1 (Ser310) Polyclonal Antibody	P15976	H,M,R,Mk	WB,ELISA
E-AB-31509	GATA-1 Polyclonal Antibody	P15976	H,M,R	WB,IHC,IF,IP,ELISA
E-AB-33339	G-CSFR Polyclonal Antibody	Q99062	H	WB,ELISA
E-AB-31537	GIMAP4 Polyclonal Antibody	Q9NUV9	H	WB,IHC,ELISA
E-AB-16487	HOXB4 Polyclonal Antibody	P17483	H,M	WB,ELISA
E-AB-20898	Phospho-ICAM-1 (Tyr512) Polyclonal Antibody	P05362	H	WB,ELISA
E-AB-16322	ICAM1 Polyclonal Antibody	P05362	H	WB,IHC,ELISA
E-AB-33678	ICAM-2 Polyclonal Antibody	P13598	H	WB,ELISA
E-AB-30142	IFN- $\gamma$ R $\alpha$ Polyclonal Antibody	P15260	H	WB,ELISA
E-AB-13871	IL11RA Polyclonal Antibody	Q14626	H	WB,ELISA
E-AB-13877	IL1R1 Polyclonal Antibody	P14778	H,M	IHC,ELISA
E-AB-30215	IL-1RII Polyclonal Antibody	P27930	H	WB,ELISA
E-AB-14833	IL2RB Polyclonal Antibody	P14784	H	WB,IHC,ELISA
E-AB-21045	Phospho-IL-2R $\beta$ (Tyr364) Polyclonal Antibody	P14784	H,M,R,Mk	WB,ELISA
E-AB-33623	IL-6R $\alpha$ Polyclonal Antibody	P08887	H	WB,ELISA
E-AB-33682	IL-7R Polyclonal Antibody	P16871	H	WB,ELISA
E-AB-33655	Integrin $\alpha$ L Polyclonal Antibody	P20701	H	WB,ELISA
E-AB-30073	Cleaved-Integrin $\alpha$ V HC (K889) Polyclonal Antibody	P06756	H	WB,ELISA
E-AB-31810	Integrin $\alpha$ V Polyclonal Antibody	P06756	H,M	WB,IHC,ELISA
E-AB-21097	Phospho-Integrin $\beta$ 3 (Tyr785) Polyclonal Antibody	P05106	H,M,R	WB,ELISA
E-AB-31812	Integrin $\beta$ 3 Polyclonal Antibody	P05106	H,M,R	WB,IHC,ELISA
E-AB-15141	IRGM Polyclonal Antibody	A1A4Y4	H	WB,IHC,ELISA
E-AB-11333	ITGA2B Polyclonal Antibody	P08514	H,M	WB,IHC,ELISA
E-AB-11334	ITGAE Polyclonal Antibody	P38570	H	WB,IHC,ELISA
E-AB-12551	ITGAM Polyclonal Antibody	P11215	H	IHC,ELISA



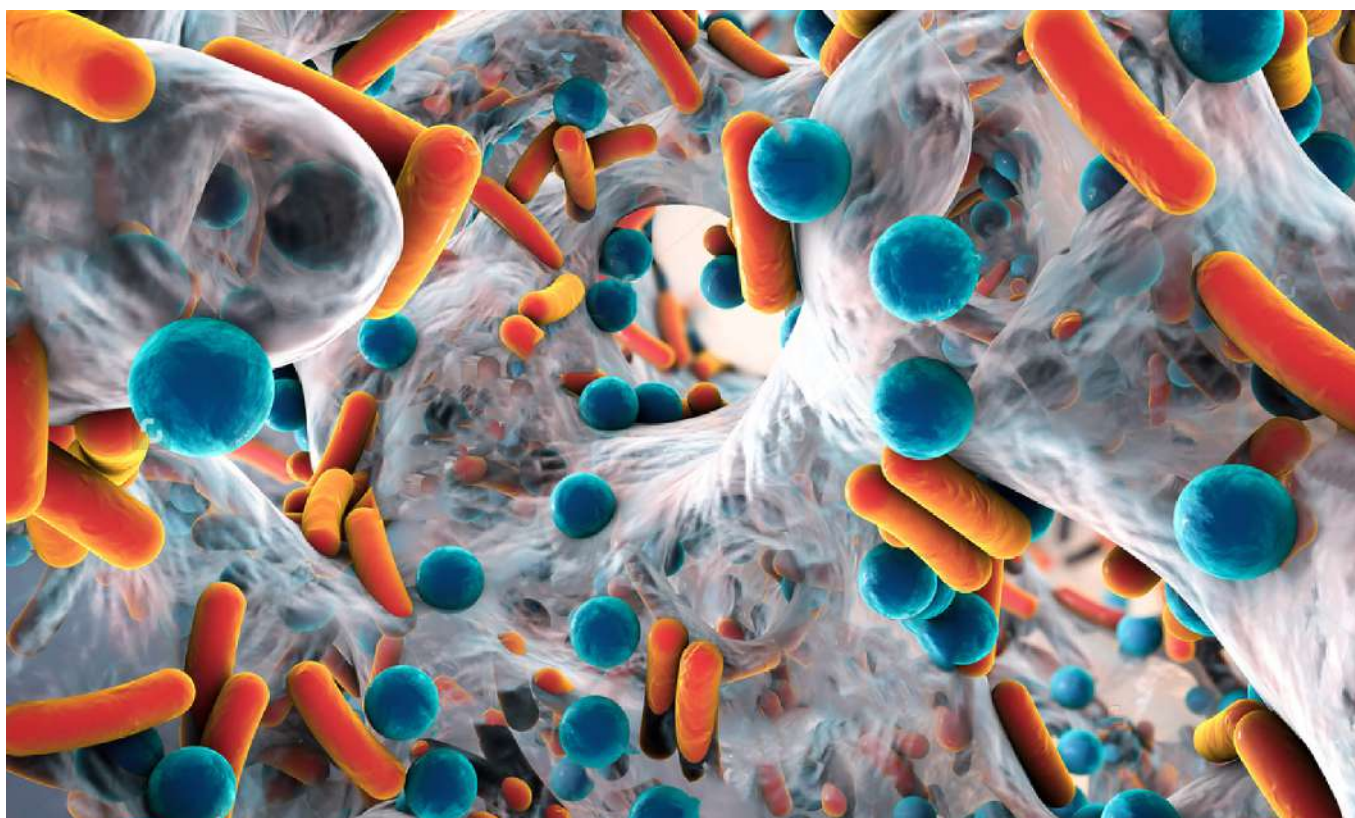
## Hematopoietic Progenitors

Cat. No.	Product Name	Swissprot	Reactivity	Application
E-AB-12550	ITGAX Polyclonal Antibody	P20702	H	IHC,ELISA
E-AB-15140	ITGB2 Polyclonal Antibody	P05107	H,M	WB,IHC,ELISA
E-AB-13340	ITGB7 Polyclonal Antibody	P26010	H	WB,IHC,ELISA
E-AB-16531	JAG1 Polyclonal Antibody	P78504	H,M,R	IHC,ELISA
E-AB-13348	JAG2 Polyclonal Antibody	Q9Y219	H	IHC,ELISA
E-AB-10277	LAMP2 Polyclonal Antibody	P13473	H	WB,IHC,ELISA
E-AB-30117	L-Selectin Polyclonal Antibody	P14151	H,M,R	WB,ELISA
E-AB-14197	LXN Polyclonal Antibody	Q9BS40	H,M,R	WB,IHC,ELISA
E-AB-13408	MEIS1 Polyclonal Antibody	O00470	H,M	IHC,ELISA
E-AB-16601	MEIS1 Polyclonal Antibody	O00470	H,M	IHC,ELISA
E-AB-12794	MME Polyclonal Antibody	P08473	H,M,R	WB,IHC,ELISA
E-AB-32057	MNDA Polyclonal Antibody	P41218	H	WB,IHC,ELISA
E-AB-32170	N-cadherin Polyclonal Antibody	P19022	H,M,R	WB,IHC,IF,ELISA
E-AB-13131	NCAM1 Polyclonal Antibody	P13591	H,M,R	WB,IHC,ELISA
E-AB-14850	NCR3 Polyclonal Antibody	O14931	H	IHC,ELISA
E-AB-16650	NMT1 Polyclonal Antibody	P30419	H,M,R	WB,IHC,ELISA
E-AB-12817	NOTCH3 Polyclonal Antibody	Q9UM47	H,M,R	WB,IHC,ELISA
E-AB-33684	Ox40 Polyclonal Antibody	P43489	H	WB,ELISA
E-AB-33697	Ox40L Polyclonal Antibody	P23510	H	WB,ELISA
E-AB-12617	PECAM1 Polyclonal Antibody	P16284	H,M	WB,IHC,ELISA
E-AB-14694	PIM1 Polyclonal Antibody	P11309	H,M,R	IHC,ELISA
E-AB-27318	P-selectin Monoclonal Antibody	P16109	H	WB,IHC,ELISA
E-AB-27329	RBM15 Monoclonal Antibody	Q96T37	H	WB,IF,ELISA
E-AB-21010	Phospho-RUNX1 (Ser249) Polyclonal Antibody	Q01196	H,M,R	WB,ELISA
E-AB-13120	SIGLEC7 Polyclonal Antibody	Q9Y286	H	WB,IHC,ELISA

## Hematopoietic Progenitors

Cat. No.	Product Name	Swissprot	Reactivity	Application
E-AB-11043	SLAMF1 Polyclonal Antibody	Q13291	H	WB,ELISA
E-AB-10603	SOCS3 Polyclonal Antibody	O14543	H,M,R	WB,IHC,ELISA
E-AB-16745	TFRC Polyclonal Antibody	P02786	H,M,R	WB,IHC,ELISA
E-AB-16098	THY1 Polyclonal Antibody	P04216	H,M,R	IHC,ELISA
E-AB-16917	TRIM22 Polyclonal Antibody	Q8IYM9	H	WB,IHC,ELISA

## Lineage Markers



Cat. No.	Product Name	Swissprot	Reactivity	Application
E-AB-33323	$\alpha$ -SMA Polyclonal Antibody	P62736	H,M,R	WB,IHC,ELISA
E-AB-30423	Actinin- $\alpha$ 1/2/3/4 Polyclonal Antibody	P12814/P35609/ Q08043/O43707	H,M,R	WB,IHC,ELISA
E-AB-13798	AGR2 Polyclonal Antibody	O95994	H,M	WB,IHC,ELISA
E-AB-10001	ALB Polyclonal Antibody	P02768	H	WB,IHC,ELISA
E-AB-30530	ApoE Polyclonal Antibody	P02649	H,M,R	WB,IHC,ELISA
E-AB-30646	Bek Polyclonal Antibody	P21802	H,M,R	WB,IHC,IF,ELISA
E-AB-22020	CDX2 Monoclonal Antibody	Q99626	H,M,R	WB,IHC
E-AB-30947	Claudin-6 Polyclonal Antibody	P56747	H	WB,IHC,IF,ELISA
E-AB-30977	CNG-1 $\beta$ Polyclonal Antibody	Q14028	H,M,R	WB,ELISA
E-AB-11176	EDA Polyclonal Antibody	Q92838	H,M	IHC,ELISA
E-AB-16526	FABP2 Polyclonal Antibody	P12104	H,M,R	WB,IHC,ELISA
E-AB-33441	FGF-23 Polyclonal Antibody	Q9GZV9	H	WB,ELISA
E-AB-31448	FN1 Polyclonal Antibody	P02751	H,M,R	WB,IHC,ELISA



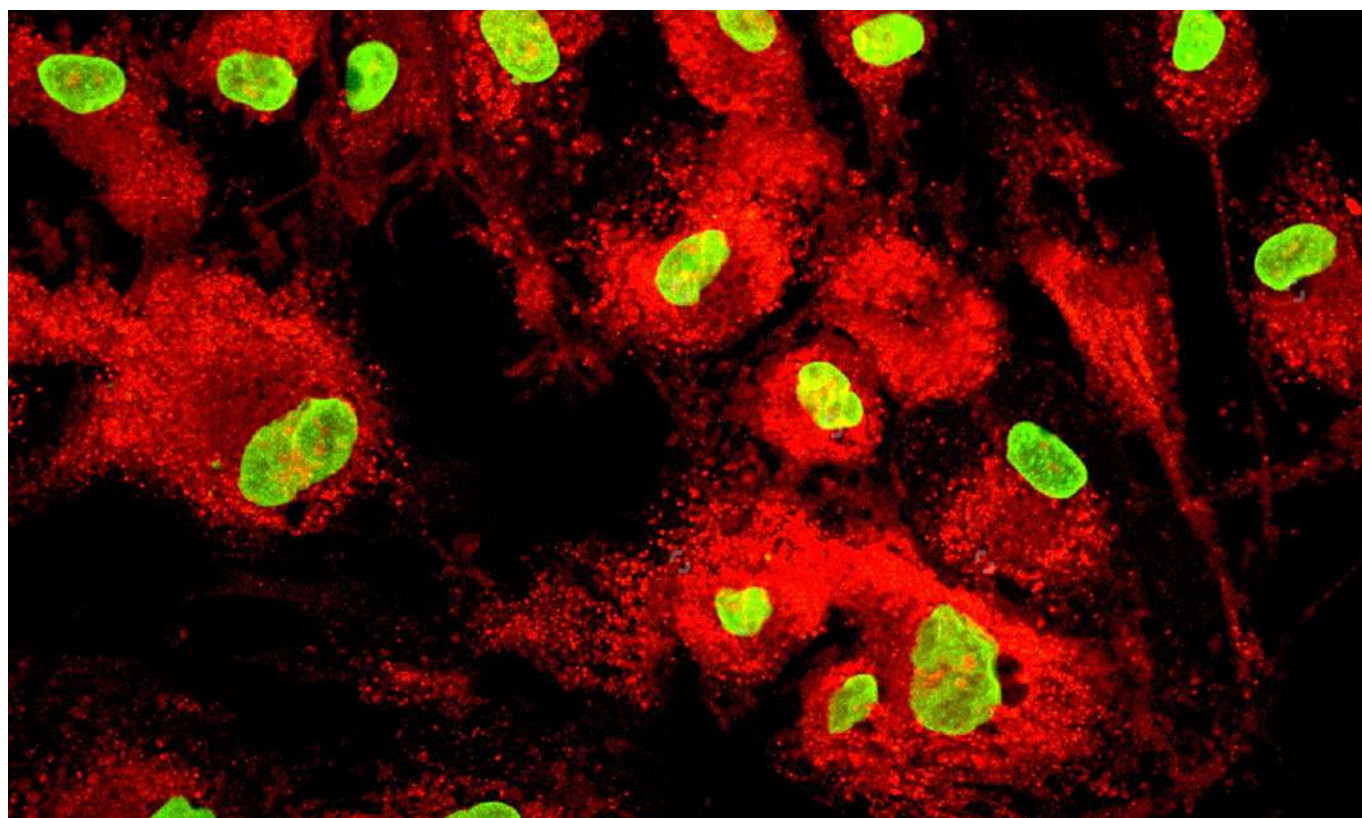
## Lineage Markers

Cat. No.	Product Name	Swissprot	Reactivity	Application
E-AB-15639	FOXA2 Polyclonal Antibody	Q9Y261	H,M,R	WB,IHC,ELISA
E-AB-31511	GATA-4 Polyclonal Antibody	P43694	H,M,R	WB,IHC,IF,ELISA
E-AB-12447	GATA6 Polyclonal Antibody	Q92908	H,M,R	IHC,ELISA
E-AB-31517	GCG Polyclonal Antibody	P01275	H,M,R,Mk	WB,IHC,IF,ELISA
E-AB-40030	GLP1 Polyclonal Antibody	P01275	H	WB
E-AB-33476	Glypican-3 Polyclonal Antibody	P51654	H,M,R	WB,ELISA
E-AB-15999	INA Polyclonal Antibody	Q16352	H,M	WB,IHC,ELISA
E-AB-10399	INHBA Polyclonal Antibody	P08476	H,M,R	WB,IHC,ELISA
E-AB-30156	Inhibin $\beta$ -A Polyclonal Antibody	P08476	H,M,R	WB,ELISA
E-AB-40029	intestinal FABP Polyclonal Antibody	P12104	M,R	IHC
E-AB-12482	LRP2 Polyclonal Antibody	P98164	H,M,R	IHC,ELISA
E-AB-32135	MYBPC1 Polyclonal Antibody	Q00872	H,M,R	WB,ELISA
E-AB-14233	MYH7 Polyclonal Antibody	P12883	H,M,R	IHC,ELISA
E-AB-30174	MYH-pan Polyclonal Antibody	P12882/Q9UKX2/ P11055/Q9Y623/ P13533/P12883/ P13535	H,M,R	WB,ELISA
E-AB-15224	MYL3 Polyclonal Antibody	P08590	H,M,R	WB,IHC,ELISA
E-AB-16639	NEFH Polyclonal Antibody	P12036	H	IHC,ELISA
E-AB-16640	NEFM Polyclonal Antibody	P07197	H,M,R	WB,IHC,ELISA
E-AB-16814	NES Polyclonal Antibody	P48681	H	IHC,ELISA
E-AB-16653	NOX1 Polyclonal Antibody	Q9Y5S8	H,M,R	IHC,ELISA
E-AB-22029	NSE Monoclonal Antibody	P09104	H,M,R	WB,IHC
E-AB-15824	PDX1 Polyclonal Antibody	P52945	H,M,R	WB,IHC,ELISA
E-AB-21048	Phospho-LEF-1 (Ser42) Polyclonal Antibody	Q9UJU2	H,M,R	WB,ELISA
E-AB-32899	SIP1 Polyclonal Antibody	O60315	H,M,R	WB,IHC,ELISA
E-AB-32939	Somatostatin Polyclonal Antibody	P61278	H,M,R	WB,IHC,ELISA

## Lineage Markers

Cat. No.	Product Name	Swissprot	Reactivity	Application
E-AB-10608	SOX7 Polyclonal Antibody	Q9BT81	H,M	WB,ELISA
E-AB-32941	Sox-9 Polyclonal Antibody	P48436	H,M	WB,IHC,IF,ELISA
E-AB-14366	SPARC Polyclonal Antibody	P09486	H,M,R	WB,IHC,ELISA
E-AB-12654	SRF Polyclonal Antibody	P11831	H,M	WB,IHC,ELISA
E-AB-10201	TNNI3 Polyclonal Antibody	P19429	H,M,R	WB,IHC,ELISA
E-AB-21220	Phospho-Vimentin (Ser56) Polyclonal Antibody	P08670	H	WB,IHC,ELISA
E-AB-21219	Phospho-Vimentin (Ser83) Polyclonal Antibody	P08670	H,M,R	WB,IHC,ELISA
E-AB-22085	Vimentin Monoclonal Antibody	P08670	H,M,R	WB
E-AB-33217	Vimentin Polyclonal Antibody	P08670	H	WB,IHC,IF,ELISA
E-AB-10589	ZEB2 Polyclonal Antibody	O60315	H,M	IHC,ELISA

## Mesenchymal Stem Cells



Cat. No.	Product Name	Swissprot	Reactivity	Application
E-AB-22080	$\alpha$ skeletal muscle actin Monoclonal Antibody	P68133	H,M,R	WB,IP
E-AB-33390	$\alpha$ -SMA Polyclonal Antibody	P68133	H,M,R	WB,ELISA
E-AB-30013	Adiponectin Polyclonal Antibody	Q15848	H	WB,ELISA
E-AB-13804	ALPL Polyclonal Antibody	P05186	H,M,R	IHC,ELISA
E-AB-14792	BGN Polyclonal Antibody	P21810	H,M,R	WB,IHC,ELISA
E-AB-30654	BMP-2 Polyclonal Antibody	P12643	H,M,R	WB,IHC,ELISA
E-AB-30660	BMP-8B Polyclonal Antibody	P34820	H	WB,ELISA
E-AB-14441	BMP2 Polyclonal Antibody	Q13873	H,M	IHC,ELISA
E-AB-22024	Carcinoembryonic Antigen Monoclonal Antibody	P06731	H	IHC
E-AB-10002	CEACAM5 Polyclonal Antibody	P06731	H	WB,IHC,ELISA
E-AB-21206	Phospho-c-Fms (Tyr561) Polyclonal Antibody	P07333	H,M,R	WB,IHC,ELISA
E-AB-30897	c-Fms Polyclonal Antibody	P07333	H,M,R	WB,IHC,ELISA
E-AB-30988	COL1A2 Polyclonal Antibody	P08123	H,M,R	IHC,IF,ELISA

## Mesenchymal Stem Cells

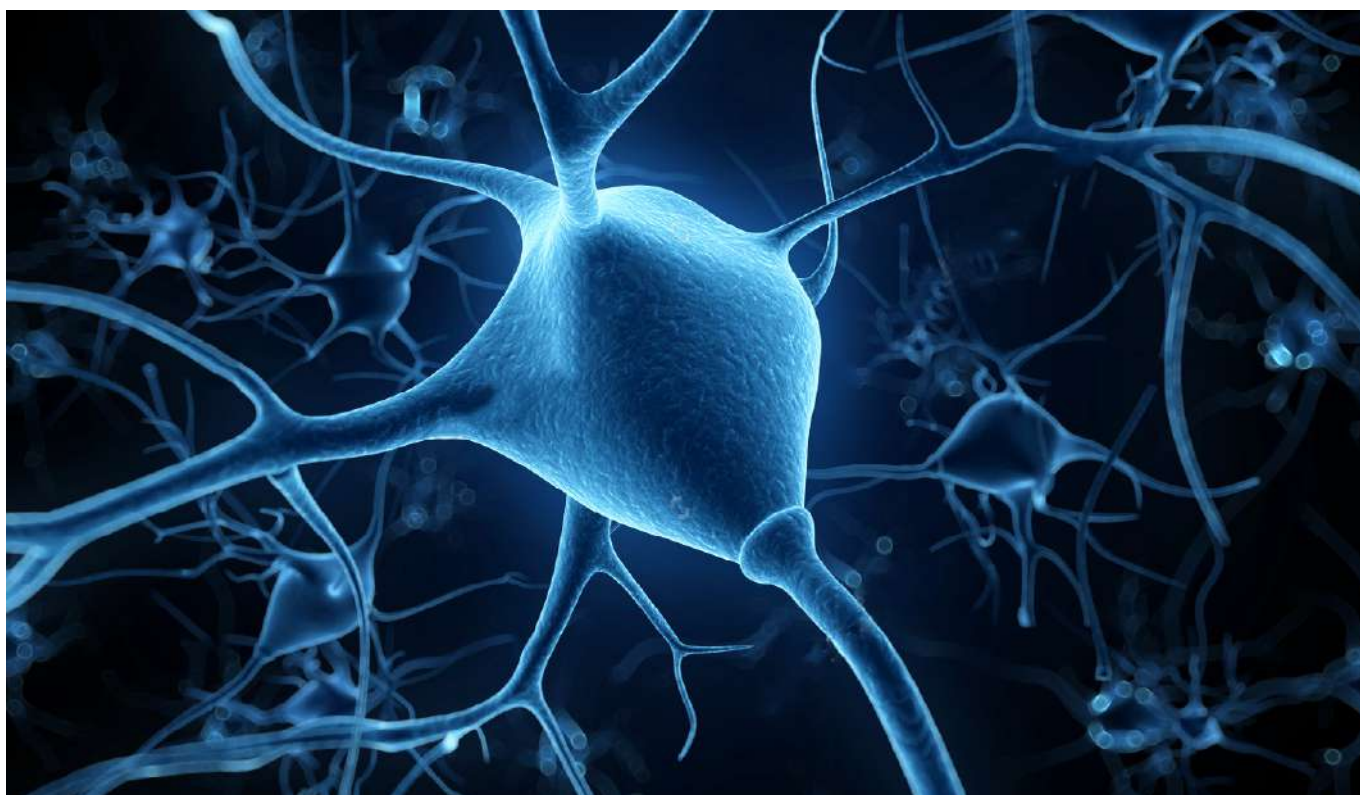
Cat. No.	Product Name	Swissprot	Reactivity	Application
E-AB-30990	COL2A1 Polyclonal Antibody	P02458	H,M,R	WB,IHC,IF,ELISA
E-AB-30038	Cleaved-COL3A1 (G1221) Polyclonal Antibody	P02461	H	WB,ELISA
E-AB-14010	COL3A1 Polyclonal Antibody	P02461	H,M,R	IHC,ELISA
E-AB-30991	COL4A1 Polyclonal Antibody	P02462	H,M	WB,IHC,ELISA
E-AB-30992	COL4A2 Polyclonal Antibody	P08572	H,M	WB,IHC,IF,ELISA
E-AB-30039	Cleaved-COL4A3 (L1425) Polyclonal Antibody	Q01955	H	WB,ELISA
E-AB-30993	COL4A6 Polyclonal Antibody	Q14031	H	WB,IHC,IF,ELISA
E-AB-22071	Collagen III Monoclonal Antibody	P02461	H,M,R	WB
E-AB-11095	COMP Polyclonal Antibody	P49747	H,M,R	WB,IHC,ELISA
E-AB-15694	CSF2RA Polyclonal Antibody	P15509	H	WB,IHC,ELISA
E-AB-11130	CYR61 Polyclonal Antibody	O00622	H,M,R	WB,IHC,ELISA
E-AB-31185	Desmin Polyclonal Antibody	P17661	H,M,R	WB,IHC,IF,ELISA
E-AB-14966	DMD Polyclonal Antibody	P11532	H,M	IHC,ELISA
E-AB-15030	FGF18 Polyclonal Antibody	O76093	H,M,R	IHC,ELISA
E-AB-15528	FGF8 Polyclonal Antibody	P55075	H,M	WB,ELISA
E-AB-27162	Fibromodulin Monoclonal Antibody	Q06828	H,M	WB,IHC,ELISA
E-AB-16459	GLMN Polyclonal Antibody	Q92990	H	IHC,ELISA
E-AB-31558	Glut4 Polyclonal Antibody	P14672	H,M,R	WB,IHC,ELISA
E-AB-13096	IBSP Polyclonal Antibody	P21815	H,M	IHC,ELISA
E-AB-12527	KLF5 Polyclonal Antibody	Q13887	H,M	WB,IHC,ELISA
E-AB-32003	MEF-2C Polyclonal Antibody	Q06413	H,M	WB,IHC,ELISA
E-AB-32118	MRTF-A Polyclonal Antibody	Q969V6	H,M	WB,IHC,ELISA
E-AB-32137	Myf-5 Polyclonal Antibody	P13349	H,M	WB,ELISA
E-AB-32138	Myf-6 Polyclonal Antibody	P23409	H,M,R	WB,IHC,ELISA



## Mesenchymal Stem Cells

Cat. No.	Product Name	Swissprot	Reactivity	Application
E-AB-32144	Myogenin Polyclonal Antibody	P15173	H,M,R	WB,ELISA
E-AB-32145	Myomesin-2 Polyclonal Antibody	P54296	H,M,Mk	WB,ELISA
E-AB-16001	NGFR Polyclonal Antibody	P08138	H,M,R	WB,IHC,ELISA
E-AB-32430	OPN Polyclonal Antibody	P10451	H,M,R	WB,IHC,ELISA
E-AB-32434	OSR2 Polyclonal Antibody	Q8N2R0	H,M,R	WB,ELISA
E-AB-16697	PDGFC Polyclonal Antibody	Q9NRA1	H,M,R	IHC,ELISA
E-AB-21020	Phospho-PPAR- $\gamma$ (Ser112) Polyclonal Antibody	P37231	H,M,R	WB,ELISA
E-AB-13559	RBM38 Polyclonal Antibody	Q9H0Z9	H,M	WB,IHC,ELISA
E-AB-32837	RUNX2 Polyclonal Antibody	Q13950	H,M	WB,IHC,ELISA
E-AB-15417	STC2 Polyclonal Antibody	O76061	H,M,R	IHC,ELISA
E-AB-33640	TNAP Polyclonal Antibody	P05186	H,R	WB,ELISA
E-AB-12662	TNC Polyclonal Antibody	P24821	H,M	IHC,ELISA
E-AB-30160	TPO Polyclonal Antibody	P40225	H	WB,ELISA
E-AB-30109	Troponin T-C Polyclonal Antibody	P45379	H,M,R	WB,ELISA
E-AB-30063	Cleaved-Tumstatin (P1426) Polyclonal Antibody	Q01955	H,Mk	WB,ELISA
E-AB-27402	VCAM-1 Monoclonal Antibody	P19320	H	WB,IHC,ELISA

## Neural Stem Cells

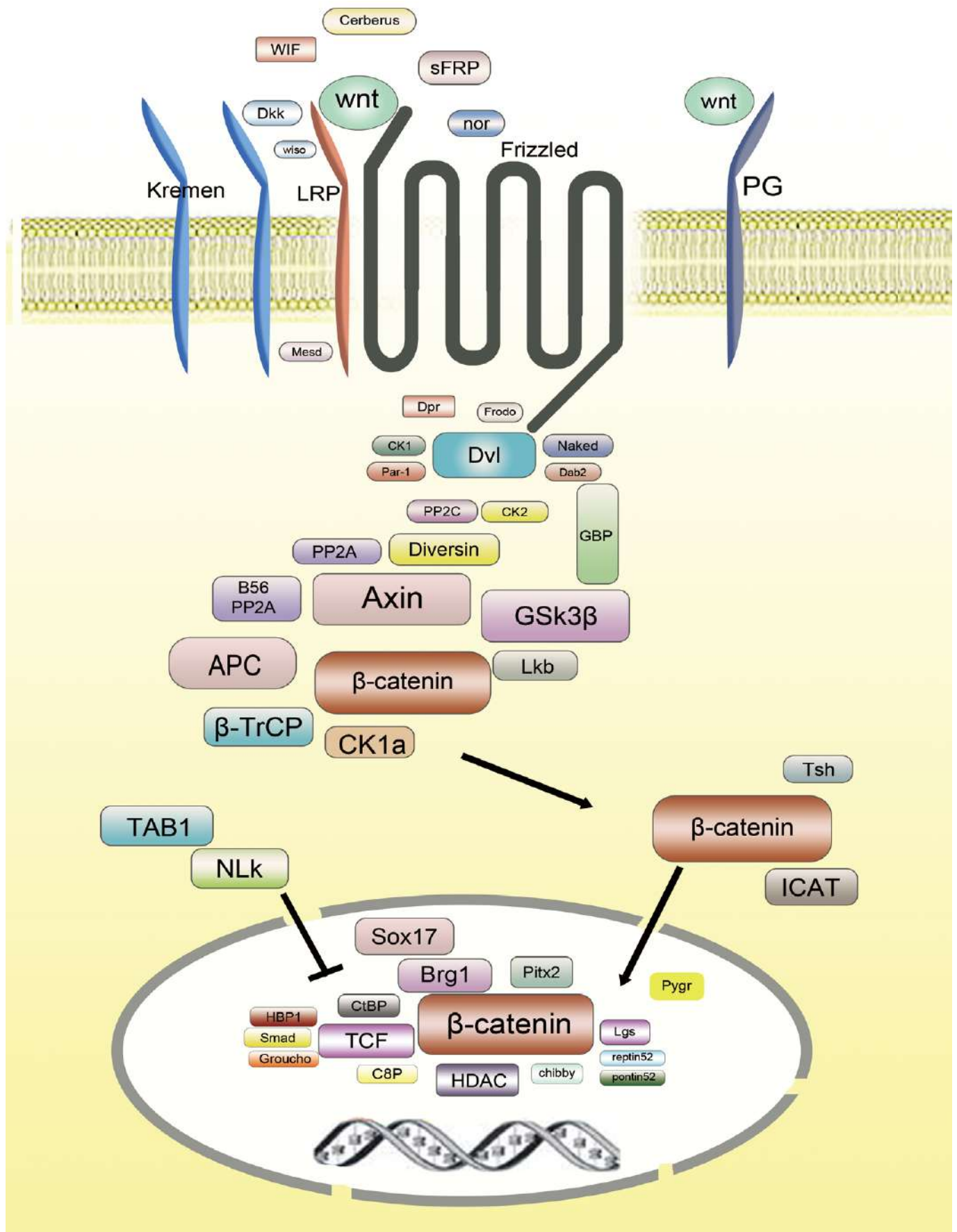


Cat. No.	Product Name	Swissprot	Reactivity	Application
E-AB-12265	CST3 Polyclonal Antibody	P01034	H	WB,IHC,ELISA
E-AB-31133	Cystatin C Polyclonal Antibody	P01034	H,M,R,Mk	WB,ELISA
E-AB-31207	Dlx-5 Polyclonal Antibody	P56178	H,M,R	WB,IHC,IF,ELISA
E-AB-31258	EAAT1 Polyclonal Antibody	P43003	H	WB,ELISA
E-AB-31320	Emx1 Polyclonal Antibody	Q04741	H,M,R	WB,ELISA
E-AB-15525	FGF2 Polyclonal Antibody	P09038	H,M,R	WB,IHC,ELISA
E-AB-31426	FGFR-3 Polyclonal Antibody	P22607	H,M,R	WB,IHC,ELISA
E-AB-21090	Phospho-FGFR-4 (Tyr642) Polyclonal Antibody	P22455	H,M,R	WB,ELISA
E-AB-31478	Frizzled-9 Polyclonal Antibody	O00144	H,M,Mk	WB,IF,ELISA
E-AB-33731	GDF-7 Polyclonal Antibody	Q7Z4P5	H,M,R	WB,ELISA
E-AB-22022	GFAP Monoclonal Antibody	P14136	M,R	WB
E-AB-27178	GFAP Monoclonal Antibody	P14136	H,M,R	WB,IHC,IF,ELISA
E-AB-31533	GFAP Polyclonal Antibody	P14136	H	WB,IHC,IF,ELISA
E-AB-16476	HES5 Polyclonal Antibody	Q5TA89	H,M,R	WB,ELISA

## Neural Stem Cells

Cat. No.	Product Name	Swissprot	Reactivity	Application
E-AB-31753	HuB/D Polyclonal Antibody	Q12926/P26378	H,M,R	WB,IHC,IF,ELISA
E-AB-33518	Integrin $\alpha$ 4 Polyclonal Antibody	P13612	H,M,R	WB,ELISA
E-AB-31821	IPMK Polyclonal Antibody	Q8NFU5	H,M,R,Mk	WB,IHC,ELISA
E-AB-13382	LLGL1 Polyclonal Antibody	Q15334	H	IHC,ELISA
E-AB-16570	LLGL1 Polyclonal Antibody	Q15334	H	WB,ELISA
E-AB-22030	MAP2 Monoclonal Antibody	P11137	H,M,R	IHC
E-AB-32205	Neuro D2 Polyclonal Antibody	Q15784	H,M,R	WB,IHC,ELISA
E-AB-12806	NEUROG1 Polyclonal Antibody	Q92886	H	WB,IHC,ELISA
E-AB-32208	Neuroglycan C Polyclonal Antibody	O95196	H,M,R	WB,ELISA
E-AB-30054	Cleaved-Notch 1 (V1754) Polyclonal Antibody	P46531	H,M,R	WB,IHC,ELISA
E-AB-30055	Cleaved-Notch 2 (A1734) Polyclonal Antibody	Q04721	H,M,R	WB,ELISA
E-AB-30056	Cleaved-Notch 2 (D1733) Polyclonal Antibody	Q04721	H,M,R	WB,IHC,ELISA
E-AB-16693	PCSK9 Polyclonal Antibody	Q8NBP7	H	WB,ELISA
E-AB-40034	S100 beta Polyclonal Antibody	P04271	H,M,R	IHC
E-AB-12650	SOX1 Polyclonal Antibody	O00570	H,M	WB,ELISA
E-AB-13687	SOX11 Polyclonal Antibody	P35716	H,M,R	WB,IHC,ELISA
E-AB-33246	ZAC1 Polyclonal Antibody	Q9UM63	H	WB,ELISA

# Signaling Pathways





## Signaling Pathways

Cat. No.	Product Name	Swissprot	Reactivity	Application
E-AB-27562	14-3-3 sigma Monoclonal Antibody	P31947	H	WB,IHC,IF,ELISA
E-AB-21258	Phospho-14-3-3 ζ (Ser58) Polyclonal Antibody	P63104	H,M,R	WB,IHC,IF,ELISA
E-AB-30363	14-3-3 ζ Polyclonal Antibody	P63104	H,M,R	WB,IHC,IF,IP,ELISA
E-AB-30364	14-3-3 θ Polyclonal Antibody	P27348	H,M,R	WB,IHC,IF,ELISA
E-AB-30365	14-3-3 θ/r Polyclonal Antibody	P27348	H,M,R	WB,IHC,IF,ELISA
E-AB-10032	ACVR1B Polyclonal Antibody	P36896	H,M,R	WB,IHC,ELISA
E-AB-10734	ADAM17 Polyclonal Antibody	P78536	H,M,R	IHC,ELISA
E-AB-30479	ALK-1 Polyclonal Antibody	P37023	H,M,R	WB,IHC,IF,ELISA
E-AB-13234	AMER1 Polyclonal Antibody	Q5JTC6	H,M	IHC,ELISA
E-AB-12715	AMH Polyclonal Antibody	P03971	H,M,R	IHC,ELISA
E-AB-10789	AMHR2 Polyclonal Antibody	Q16671	H,M,R	IHC,ELISA
E-AB-30497	Angptl7 Polyclonal Antibody	O43827	H,M	WB,IHC,ELISA
E-AB-30520	APC Polyclonal Antibody	P25054	H,M,R	WB,IHC,IF,ELISA
E-AB-14780	AXIN2 Polyclonal Antibody	Q9Y2T1	H,M,R	WB,IHC,ELISA
E-AB-22028	β-Catenin Monoclonal Antibody	P35222	H,M,R	WB,IHC
E-AB-13952	BMP4 Polyclonal Antibody	P12644	H,M,R	WB,IHC,ELISA
E-AB-30657	BMP-5 Polyclonal Antibody	P22003	H,M	WB,IHC,ELISA
E-AB-13093	BMP6 Polyclonal Antibody	P22004	H,M,R	WB,IHC,ELISA
E-AB-30658	BMP-7 Polyclonal Antibody	P18075	H,M,R	WB,IHC,ELISA
E-AB-21205	Phospho-Casein Kinase IIβ (Ser209) Polyclonal Antibody	P67870	H,M,R	WB,IHC,ELISA
E-AB-30745	Casein Kinase IIβ Polyclonal Antibody	P67870	H,M,R	WB,IHC,ELISA
E-AB-21226	Phospho-Casein Kinase Iα (Tyr294) Polyclonal Antibody	P48729/Q8N752	H,M,R	WB,IHC,ELISA
E-AB-21054	Phospho-Casein Kinase Iα (Tyr321) Polyclonal Antibody	P48729	H,M,R	WB,IHC,ELISA
E-AB-30747	Casein Kinase Iα Polyclonal Antibody	P48729	H,M,R	WB,IHC,IF,ELISA

## Signaling Pathways

Cat. No.	Product Name	Swissprot	Reactivity	Application
E-AB-30748	Casein Kinase I $\gamma$ 1 Polyclonal Antibody	Q9HCP0	H,M,R,Mk	WB,IHC,IF,ELISA
E-AB-30763	Catenin- $\alpha$ E/N Polyclonal Antibody	P35221/P26232	H,M,R	WB,IHC,IF,ELISA
E-AB-20828	Phospho-Catenin- $\beta$ (Ser37) Polyclonal Antibody	P35222	H,M,R	WB,IHC,IF,ELISA
E-AB-21310	Phospho-Catenin- $\beta$ (Ser552) Polyclonal Antibody	P35222	H,M,R	WB,ELISA
E-AB-20829	Phospho-Catenin- $\beta$ (Thr41/Ser45) Polyclonal Antibody	P35222	H,M,R	WB,ELISA
E-AB-20830	Phospho-Catenin- $\beta$ (Tyr654) Polyclonal Antibody	P35222	H,M,R	WB,IHC,ELISA
E-AB-30765	Catenin- $\beta$ Polyclonal Antibody	P35222	H,M,R	WB,IHC,IF,ELISA
E-AB-10937	CBY1 Polyclonal Antibody	Q9Y3M2	H,M,R	IHC,ELISA
E-AB-30223	CD225 Polyclonal Antibody	P13164	H	WB,ELISA
E-AB-30157	Cerberus Polyclonal Antibody	O95813	H,R	WB,ELISA
E-AB-21265	Phospho-c-Myc (Ser62) Polyclonal Antibody	P01106	H,M,R	WB,IHC,IF,ELISA
E-AB-20845	Phospho-c-Myc (Thr58) Polyclonal Antibody	P01106	H,M,R	WB,IHC,IP,ELISA
E-AB-30974	c-Myc Polyclonal Antibody	P01106	H,M,R	WB,IHC,IF,ELISA
E-AB-12305	CREBBP Polyclonal Antibody	Q92793	H,M,R	IHC,ELISA
E-AB-31039	CRP1 Polyclonal Antibody	P21291	H,M,R	WB,IHC,ELISA
E-AB-12320	CSNK1A1 Polyclonal Antibody	P48729	H,M	WB,IHC,ELISA
E-AB-14897	CSNK1D Polyclonal Antibody	P48730	H,M,R	WB,IHC,ELISA
E-AB-10207	CTNNA1 Polyclonal Antibody	P35221	H,M	WB,IHC,ELISA
E-AB-11109	CTNNBIP1 Polyclonal Antibody	Q9NSA3	H,M	IHC,ELISA
E-AB-11113	CXXC5 Polyclonal Antibody	Q7LFL8	H,M,R	WB,IHC,ELISA
E-AB-16375	DAAM1 Polyclonal Antibody	Q9Y4D1	H,M	WB,IHC,ELISA
E-AB-13196	DHH Polyclonal Antibody	O43323	H	IHC,ELISA
E-AB-14041	DKK1 Polyclonal Antibody	O94907	H,M	WB,ELISA
E-AB-10286	DKK2 Polyclonal Antibody	Q9UBU2	H,M	IHC,ELISA

## Signaling Pathways

Cat. No.	Product Name	Swissprot	Reactivity	Application
E-AB-14043	DKK2 Polyclonal Antibody	Q9UBU2	H,M	WB,ELISA
E-AB-14042	DKK3 Polyclonal Antibody	Q9UBP4	H,M	WB,IHC,ELISA
E-AB-10285	DKK4 Polyclonal Antibody	Q9UBT3	H	IHC,ELISA
E-AB-10282	DTX3 Polyclonal Antibody	Q8N9I9	H,M	WB,IHC,ELISA
E-AB-31246	Dvl-2 Polyclonal Antibody	O14641	H,M	WB,IHC,ELISA
E-AB-20216	Acetyl-E2F-4 (Lys96) Polyclonal Antibody	Q16254	H, M, R	WB,ELISA
E-AB-12375	E2F4 Polyclonal Antibody	Q16254	H,M	IHC,ELISA
E-AB-31254	E2F-4/5 Polyclonal Antibody	Q16254/Q15329	H,M,R,Mk	WB,IHC,ELISA
E-AB-11177	EDA2R Polyclonal Antibody	Q9HAV5	H	WB,IHC,ELISA
E-AB-31371	ERK 1 Polyclonal Antibody	P27361	H,M,R	WB,IF,ELISA
E-AB-20868	Phospho-ERK 1/2 (Thr202) Polyclonal Antibody	P27361/P28482	H,M,R	WB,ELISA
E-AB-21303	Phospho-ERK 1/2 (Thr202/Tyr204) Polyclonal Antibody	P27361/P28482	H,M,R	WB,IHC,ELISA
E-AB-20869	Phospho-ERK 1/2 (Tyr204) Polyclonal Antibody	P27361/P28482	H,M,R	WB,IHC,IF,ELISA
E-AB-21084	Phospho-ERK 1/2 (Tyr222/205) Polyclonal Antibody	P28482/P27361	H,M,R	WB,ELISA
E-AB-31374	ERK 1/2 Polyclonal Antibody	P27361/P28482	H,M,R	WB,IHC,ELISA
E-AB-31375	ERK 2 Polyclonal Antibody	P28482	H,M,R	WB,IHC,IF,ELISA
E-AB-31376	ERK 3 Polyclonal Antibody	Q16659	H,M,R	WB,ELISA
E-AB-31474	Frizzled-1 Polyclonal Antibody	Q9UP38	H	WB,IF,ELISA
E-AB-31475	Frizzled-10 Polyclonal Antibody	Q9ULW2	H,M,Mk	WB,IHC,IF,ELISA
E-AB-31476	Frizzled-3 Polyclonal Antibody	Q9NPG1	H,M	WB,IF,ELISA
E-AB-31477	Frizzled-7 Polyclonal Antibody	O75084	H,M	WB,IF,ELISA
E-AB-31479	FRP-2 Polyclonal Antibody	Q96HF1	H,M,R	WB,ELISA
E-AB-12680	FZD2 Polyclonal Antibody	Q14332	H,M,R	IHC,ELISA
E-AB-15889	FZD2 Polyclonal Antibody	Q14332	H,M,R	WB,ELISA

## Signaling Pathways

Cat. No.	Product Name	Swissprot	Reactivity	Application
E-AB-10687	FZD4 Polyclonal Antibody	Q9ULV1	H,M,R	WB,IHC,ELISA
E-AB-16118	FZD8 Polyclonal Antibody	Q9H461	H,M,R	IHC,ELISA
E-AB-16450	GAS1 Polyclonal Antibody	P54826	H	WB,IHC,ELISA
E-AB-12467	GDF1 Polyclonal Antibody	P27539	H,M	WB,ELISA
E-AB-14103	GDF9 Polyclonal Antibody	O60383	H,M	WB,IHC,ELISA
E-AB-20884	Phospho-GSK3 $\alpha$ (Ser21) Polyclonal Antibody	P49840	H,M,R	WB,IHC,IP,ELISA
E-AB-31627	GSK3 $\alpha$ Polyclonal Antibody	P49840	H,M,R	WB,IHC,IP,ELISA
E-AB-20885	Phospho-GSK3 $\alpha/\beta$ (Tyr279/216) Polyclonal Antibody	P49840/P49841	H,M,R	WB,IHC,ELISA
E-AB-31628	GSK3 $\alpha/\beta$ Polyclonal Antibody	P49840/P49841	H,M,R	WB,IHC,ELISA
E-AB-21003	Phospho-GSK3 $\beta$ (Ser9) Polyclonal Antibody	P49841	H,M,R	WB,IHC,ELISA
E-AB-31629	GSK3 $\beta$ Polyclonal Antibody	P49841	H,M,R	WB,IHC,IP,ELISA
E-AB-21043	Phospho-HBP1 (Ser402) Polyclonal Antibody	O60381	H	WB,IHC,ELISA
E-AB-31639	HBP1 Polyclonal Antibody	O60381	H,M,R,Mk	WB,IHC,ELISA
E-AB-31644	HDAC2 Polyclonal Antibody	Q92769	H,M,R,Mk	WB,IHC,ELISA
E-AB-31645	HDAC3 Polyclonal Antibody	O15379	H,M,R	WB,IHC,IF,ELISA
E-AB-20887	Phospho-HDAC4 (Ser632) Polyclonal Antibody	P56524	H,M,R	WB,ELISA
E-AB-20888	Phospho-HDAC5 (Ser498) Polyclonal Antibody	Q9UQL6	H,M	WB,IHC,IF,ELISA
E-AB-31647	HDAC5 Polyclonal Antibody	Q9UQL6	H,M	WB,IHC,IF,ELISA
E-AB-21013	Phospho-HDAC5/9 (Ser259/220) Polyclonal Antibody	Q9UQL6/Q9UKV0	H,M	WB,IHC,ELISA
E-AB-31648	HDAC5/9 Polyclonal Antibody	Q9UQL6/Q9UKV0	H,M	WB,IHC,ELISA
E-AB-21286	Phospho-HDAC6 (Ser22) Polyclonal Antibody	Q9UBN7	H,M	WB,IHC,IF,ELISA
E-AB-15715	HDAC7 Polyclonal Antibody	Q8WUI4	H,M	WB,IHC,ELISA
E-AB-20889	Phospho-HDAC8 (Ser39) Polyclonal Antibody	Q9BY41	H,M,R	WB,IHC,ELISA
E-AB-14127	HDAC8 Polyclonal Antibody	Q9BY41	H,M,R	WB,IHC,ELISA



## Signaling Pathways

Cat. No.	Product Name	Swissprot	Reactivity	Application
E-AB-31661	Hic-5 Polyclonal Antibody	O43294	H,M,R	IHC,IF,ELISA
E-AB-31671	Histone deacetylase 1 Polyclonal Antibody	Q13547	H,M,R	WB,IHC,IF,ELISA
E-AB-31672	Histone deacetylase 10 Polyclonal Antibody	Q969S8	H,M,R,Mk	WB,IHC,ELISA
E-AB-31673	Histone deacetylase 6 Polyclonal Antibody	Q9UBN7	H,M	WB,IHC,IF,ELISA
E-AB-16502	ID2 Polyclonal Antibody	Q02363	H,M,R	IHC,ELISA
E-AB-31760	Id4 Polyclonal Antibody	P47928	H,M,R	WB,IHC,ELISA
E-AB-13321	IFNGR2 Polyclonal Antibody	P38484	H,M	WB,IHC,ELISA
E-AB-31763	IFN- $\gamma$ Polyclonal Antibody	P01579	H	WB,IHC,ELISA
E-AB-15126	IHH Polyclonal Antibody	Q14623	H,M	IHC,ELISA
E-AB-22026	Kif 7 Monoclonal Antibody	Q2M1P5	H,M,R	IHC
E-AB-14178	KIF3A Polyclonal Antibody	Q9Y496	H,M	WB,IHC,ELISA
E-AB-33724	Lefty Polyclonal Antibody	O75610/O00292	H,M	WB,ELISA
E-AB-14188	LGR5 Polyclonal Antibody	O75473	H,M,R	IHC,ELISA
E-AB-15626	MAPK6 Polyclonal Antibody	Q16659	H,M,R	IHC,ELISA
E-AB-13406	MDFIC Polyclonal Antibody	Q9P1T7	H	IHC,ELISA
E-AB-11441	NCSTN Polyclonal Antibody	Q92542	H,M,R	WB,IHC,ELISA
E-AB-30057	Cleaved-Notch 4 (V1432) Polyclonal Antibody	Q99466	H,Mk	WB,ELISA
E-AB-12815	NOTCH1 Polyclonal Antibody	P46531	H,R	WB,IHC,ELISA
E-AB-16008	NOTCH4 Polyclonal Antibody	Q99466	H	IHC,ELISA
E-AB-11454	NUMB Polyclonal Antibody	P49757	H,M,R	WB,ELISA
E-AB-27276	NUMBL Monoclonal Antibody	Q9Y6R0	H	WB,IHC,ELISA
E-AB-21284	Phospho-p120 (Tyr228) Polyclonal Antibody	O60716	H,M,R	WB,IHC,IF,ELISA
E-AB-32440	p120 Polyclonal Antibody	O60716	H,M,R	WB,IHC,ELISA
E-AB-32445	p15 Polyclonal Antibody	P42772	H,M,R	WB,IHC,IF,ELISA

## Signaling Pathways

Cat. No.	Product Name	Swissprot	Reactivity	Application
E-AB-32457	p300 Polyclonal Antibody	Q09472	H	WB,IHC,ELISA
E-AB-10571	PTCH1 Polyclonal Antibody	Q13635	H,M	WB,IHC,ELISA
E-AB-27337	RSPO3 Monoclonal Antibody	Q9BXY4	H	WB,IHC,IF,ELISA
E-AB-16059	SFRP1 Polyclonal Antibody	Q8N474	H,M	IHC,ELISA
E-AB-12388	SFRP5 Polyclonal Antibody	Q5T4F7	H,M	IHC,ELISA
E-AB-32896	Siah-2 Polyclonal Antibody	O43255	H,M,R	WB,IHC,ELISA
E-AB-21128	Phospho-Smad1 (Ser465) Polyclonal Antibody	Q15797	H,M,R	WB,IHC,ELISA
E-AB-32913	Smad1 Polyclonal Antibody	Q15797	H,M	WB,IHC,IF,ELISA
E-AB-32914	Smad1/5/9 Polyclonal Antibody	Q15797/Q99717/ O15198	H,M,R	WB,IHC,ELISA
E-AB-21129	Phospho-Smad2 (Ser467) Polyclonal Antibody	Q15796	H,M,R	WB,IHC,ELISA
E-AB-32919	Smad2 Polyclonal Antibody	Q15796	H,M,R	WB,IHC,IF,ELISA
E-AB-21040	Phospho-Smad2/3 (Thr8) Polyclonal Antibody	Q15796/P84022	H,M,R	WB,ELISA
E-AB-32920	Smad2/3 Polyclonal Antibody	Q15796/P84022	H,M,R,Mk	WB,IHC,ELISA
E-AB-21041	Phospho-Smad3 (Ser204) Polyclonal Antibody	P84022	H,M,R	WB,IHC,IF,ELISA
E-AB-21209	Phospho-Smad3 (Ser208) Polyclonal Antibody	P84022	H,M,R	WB,IHC,ELISA
E-AB-21130	Phospho-Smad3 (Ser425) Polyclonal Antibody	P84022	H,M,R	WB,IHC,ELISA
E-AB-21208	Phospho-Smad3 (Thr179) Polyclonal Antibody	P84022	H,M,R	WB,IHC,ELISA
E-AB-32923	Smad3 Polyclonal Antibody	P84022	H,M,R	WB,IHC,ELISA
E-AB-10078	SMAD4 Polyclonal Antibody	Q13485	H,M,R	WB,IHC,ELISA
E-AB-10077	SMAD5 Polyclonal Antibody	Q99717	H,M,R	WB,IHC,ELISA
E-AB-12646	SMAD7 Polyclonal Antibody	O15105	H,M,R	WB,IHC,ELISA
E-AB-16251	SMAD9 Polyclonal Antibody	O15198	H,M	WB,IHC,ELISA
E-AB-12300	SMARCA4 Polyclonal Antibody	P51532	H,M,R	WB,IHC,ELISA
E-AB-12925	SMO Polyclonal Antibody	Q99835	H,R	IHC,ELISA


## Signaling Pathways

Cat. No.	Product Name	Swissprot	Reactivity	Application
E-AB-15938	SMURF2 Polyclonal Antibody	Q9HAU4	H,M	IHC,ELISA
E-AB-20980	Phospho-Sp1 (Thr739) Polyclonal Antibody	P08047	H,M,R,Mk	WB,IHC,ELISA
E-AB-32942	Sp1 Polyclonal Antibody	P08047	H,M,R	WB,IHC,IF,ELISA
E-AB-33052	TCF-1 Polyclonal Antibody	P36402	H,M	WB,IHC,ELISA
E-AB-33348	TCF-19 Polyclonal Antibody	Q9Y242	H,M,R	WB,ELISA
E-AB-33053	TCF-3 Polyclonal Antibody	P15923	H,M,R	WB,IHC,ELISA
E-AB-33054	TCF-4/12 Polyclonal Antibody	P15884/Q99081	H,M,R	WB,IHC,ELISA
E-AB-15867	TCF7 Polyclonal Antibody	P36402	H,M	WB,ELISA
E-AB-10643	TGFB1 Polyclonal Antibody	P01137	H,M,R	WB,IHC,ELISA
E-AB-21302	Phospho-TGF $\beta$ RI (Ser165) Polyclonal Antibody	P36897	H,M,R	WB,IHC,IF,ELISA
E-AB-33086	TGF $\beta$ RI Polyclonal Antibody	P36897	H,M,R	WB,IF,ELISA
E-AB-33088	TGF $\beta$ RII Polyclonal Antibody	P37173	H,M,R	WB,IHC,ELISA
E-AB-33089	TGF $\beta$ RIII Polyclonal Antibody	Q03167	H,M,R	IHC,ELISA
E-AB-33091	TGF $\beta$ 2 Polyclonal Antibody	P61812	H,M,R	WB,IHC,ELISA
E-AB-33092	TGF $\beta$ 3 Polyclonal Antibody	P10600	H,M,R,Mk	WB,IHC,ELISA
E-AB-13028	THBS1 Polyclonal Antibody	P07996	H,M	WB,IHC,ELISA
E-AB-33112	TLE4 Polyclonal Antibody	Q04727	H,M,R	WB,IHC,ELISA
E-AB-10688	VANGL1 Polyclonal Antibody	Q8TAA9	H,M	WB,IHC,ELISA
E-AB-16122	VANGL2 Polyclonal Antibody	Q9ULK5	H,M,R	WB,IHC,ELISA
E-AB-16171	WNT1 Polyclonal Antibody	P04628	H,M	WB,IHC,ELISA
E-AB-14612	WNT11 Polyclonal Antibody	O96014	H,M	IHC,ELISA
E-AB-33376	Wnt-16 Polyclonal Antibody	Q9UBV4	H,M,R	WB,ELISA
E-AB-14872	WNT3A Polyclonal Antibody	P56704	H,M	WB,IHC,ELISA
E-AB-14436	WNT9A Polyclonal Antibody	O14904	H,M	WB,ELISA

## Signaling Pathways

Cat. No.	Product Name	Swissprot	Reactivity	Application
E-AB-15795	YWHAB Polyclonal Antibody	P31946	H,M,R	WB,IHC,ELISA
E-AB-15794	YWHAE Polyclonal Antibody	P62258	H,M,R	WB,IHC,ELISA
E-AB-15796	YWHAG Polyclonal Antibody	P61981	H,M,R	WB,IHC,ELISA





**Elabscience®**

**Elabscience Biotechnology Inc.**

---

Tel:1-240-252-7368 Fax:1-240-252-7376

Website: [www.elabscience.com](http://www.elabscience.com)

Email: [orders@elabscience.com](mailto:orders@elabscience.com)

Address: 14780 memorial drive, suite 216, houston, TX77079